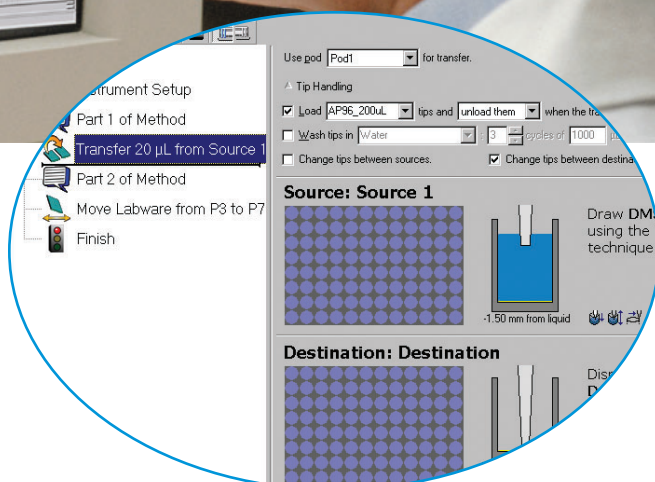
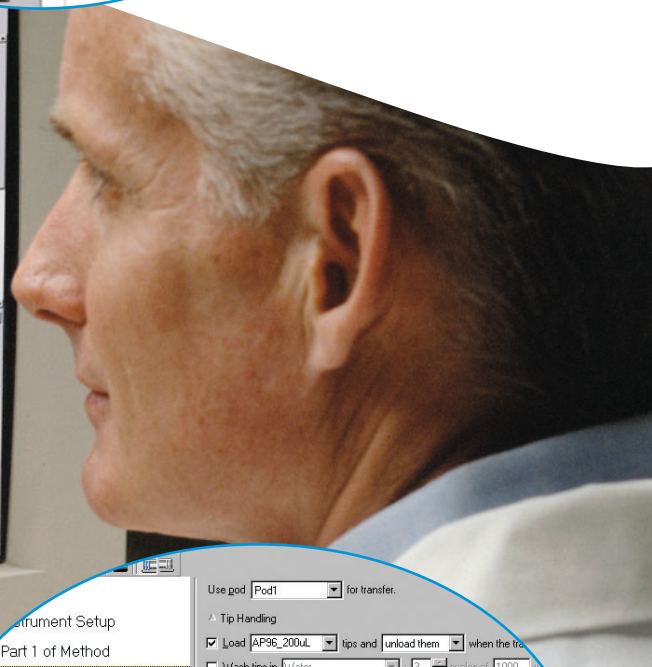
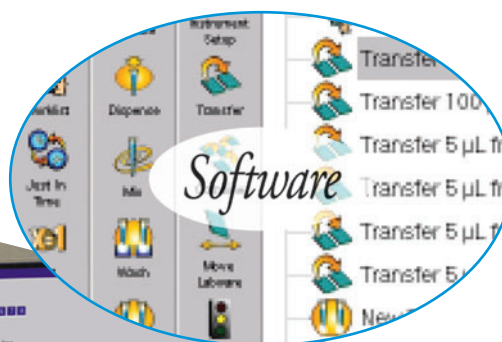
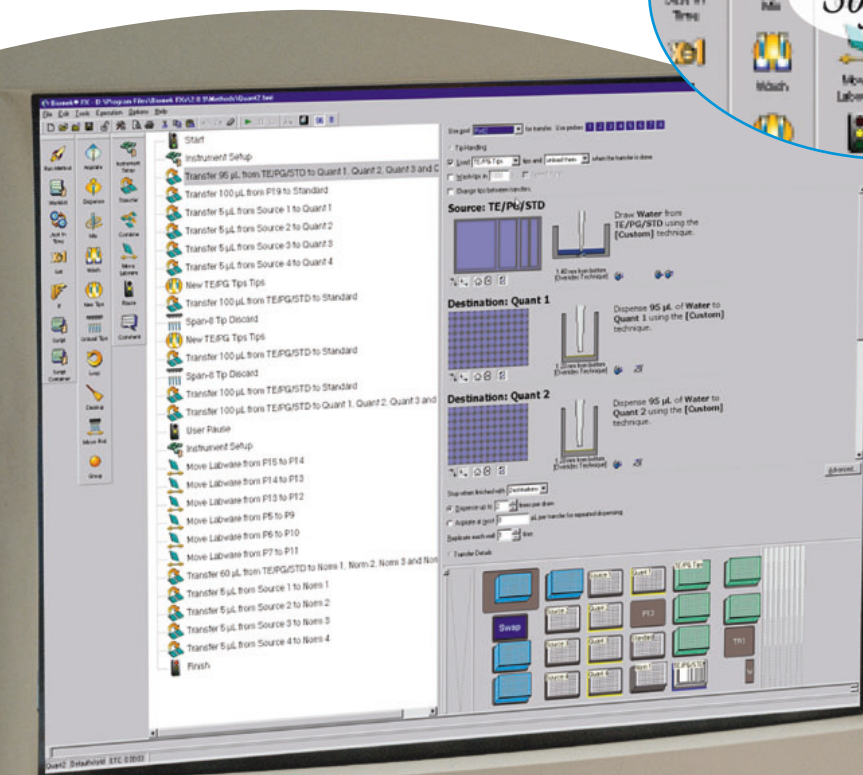




The Power of Simple Selectivity.

BIOMEK® FX SYSTEM SOFTWARE



Whether you are a first time user of automated liquid handling technology or an experienced automation expert, you'll find the Biomek FX software is packed with features to meet your needs. On the surface the software is easy to use. It eliminates a lot of the programming and redundant entries that frustrate new operators. Underneath the hood is a vast array of method automation tools. These enabling technologies make it simple for users to incorporate the Biomek FX into their automation programs. Our comprehensive approach to the software is the true differentiating factor of the Biomek FX Liquid Handling System. Take a closer look to see why the Biomek FX software is the *smart solution*.

Software features

- Well-to-well sample tracking and reporting
- Step Palettes for Drag-N-Drop Method Creation
- Liquid Types, Pipetting Techniques and Templates
- Labware and Deck Editors
- Online Help, Method Validation and Estimated Run Times
- Worklists, Variables, Loops, and Run Method

Powerful, New Software Upgrade

SAMPLE TRACKING



Sample tracking has been added to the ever-expanding functionality of the Biomek FX system software. This feature allows the complete tracking of all samples throughout the entire assay.

Information is collected and reported at the end of the method. During the method, information can be used to create additional data sets and used for on-the-fly reformatting and hit picking.



The Power of Simple Selectivity.

*Biomek FX System with integrated Stacker Carousel
for increased capacity and walk-away automation.*

Minimum System Requirements

RAM: 128 MB

Hard Drive: 20 MB Free Disk Space

Monitor Resolution: 1024 × 768

Operating System: Windows NT V. 4.0 with Service Pack

Ordering Information

719349 Biomek FX Software

*Software for programming and running all system activities for desired applications.
User's Manual and Tutorials are included on the Software CD.*

267656 Automation PC Controller

*Configuration: IBM NetWista M41, Tower, Pentium 4 – 2GHz or Faster, 256MB RAM,
40GB Hard Drive, 1.44MB Floppy Drive, 48× CD-ROM; CD-RW, RS-232 Serial Ports (2);
Parallel (1); 10/100 Ethernet Adapter, 4 Slots, 5 Bays, 15.1" LCD Display (1024 × 768)*

Your model may vary.

267689 Biomek FX System Software and Automation Controller



www.beckmancoulter.com/smartsolutions

*Developing innovative solutions in genetic
analysis, drug discovery, and instrument systems.*

Innovate Automate
SIMPLIFY

Beckman Coulter, Inc. • 4300 N. Harbor Boulevard, Box 3100 • Fullerton, California 92834-3100

Sales: 1-800-742-2345 • Service: 1-800-551-1150 • Telex: 678413 • Fax: 1-800-643-4366 • www.beckmancoulter.com

Worldwide Life Science Research Division Offices:

Australia (61) 2 9844-6000 Canada (905) 819-1234 China (86) 10 6515 6028 Eastern Europe, Middle East, Africa (41) 22 994 07 07
France 01 49 90 90 00 Germany (89) 35870-0 Hong Kong (852) 2814 7431/2814 0481 Italy 02-953921 Japan 03-5404-8359
Mexico 525-605-77-70 Netherlands 0297-230630 Singapore (65) 6339 3633 South Africa, Sub-Saharan Africa (27) 11-805-2014/5 Spain (34) 91 3836080
Sweden 08-564 85 900 Switzerland 0800 850 810 Taiwan (886) 2 2378 3456 Turkey 90 216 309 1900 U.K. 01494 441181 U.S.A. 1-800-742-2345

B2002-5058-LC-10

© 2002 Beckman Coulter, Inc.

Printed in U.S.A. on recycled paper.