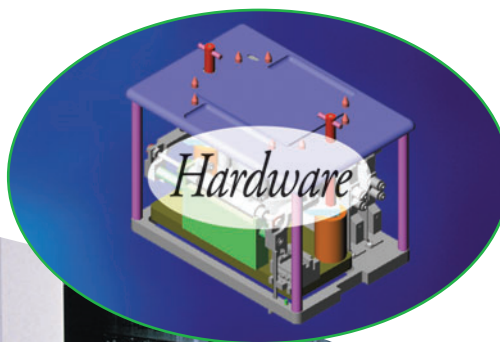




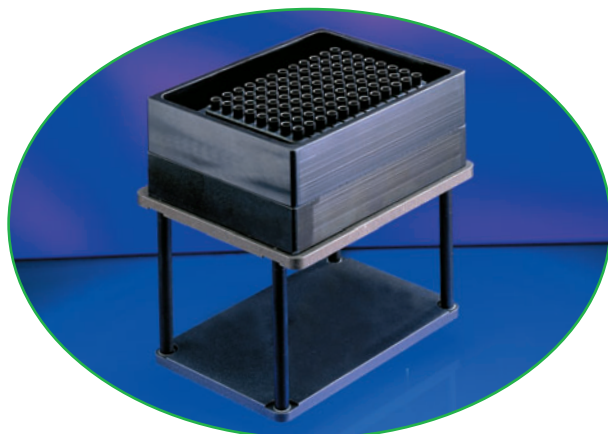
Automated Labware Positioning.

BIOMEK® FX

**DISPOSABLE TIP WASH
ALP AND DISPOSABLE
TIP LOADER ALP**



Biomek FX Disposable Tip Loader ALP



Biomek FX Disposable Tip Wash ALP

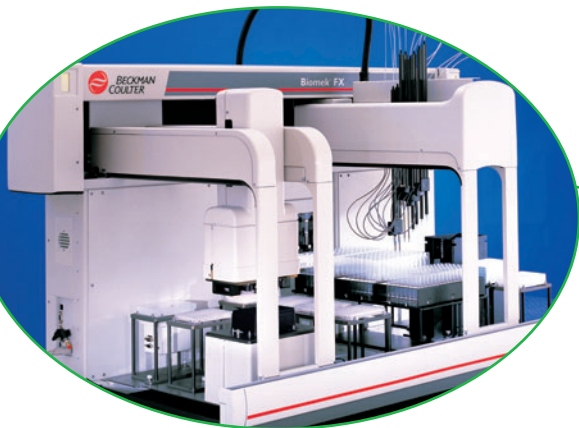
The Biomek FX has a large flexible worksurface. Integral to the system are Automated Labware Positioners (ALPs) that are uniquely designed to fit seamlessly onto the deck. These ALPs perform application-specific tasks and make it simple to configure the system for a wide variety of applications.

- Disposable Tip Loader ALP provides automated loading and unloading of Biomek AP96 and AP384 disposable tips on the Biomek FX Multichannel Pipetting Heads.
- Disposable Tip Wash ALP provides controlled liquid flow to 96- or 384-channels allowing for reduced tip usage. Multiple Tip Wash ALPs can be configured for different wash solutions.

ALPs, one more reason the Biomek FX is the *smart solution* for your liquid handling needs.

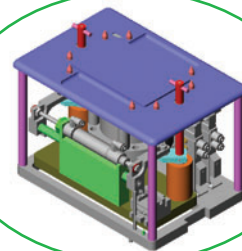
Automated Labware Positioning.

Automated Labware Positioners (ALPs) are user interchangeable for easy reconfiguration, enhanced productivity and reliability.



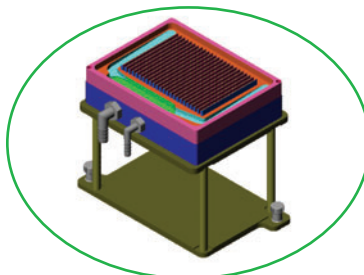
Tip Loader ALP

- Reliable automated tip loading
- Works with both Biomek AP96 and AP384 Tips
- Integrated software operation
- Internal air pressure booster reduces air pressure requirements
- Up to eight loaders on a system



Tip Washer ALP

- Available in 96- or 384-channel formats
- Software controlled
- Peristaltic pump provides liquid flow
- Manifold design optimized for reliable tip washing
- Deck accommodates multiple washers for different wash solutions
- Solvent resistant



Ordering Information

719356	Biomek FX Disposable Tip Loader ALP <i>Includes automated tip loader, tubing, and CAN communications cable. Requires: 40 PSI clean dry air; 2.5 cfm.</i>
719363	Biomek FX Disposable Tip Wash ALP - 96-Channel, 120 V
719688	Biomek FX Disposable Tip Wash ALP - 96-Channel, 220 V <i>Includes wash station, wash pump, supply tank, and drain/waste tank, ALP platform. Requires: Biomek FX Device Controller (P/N 719366).</i>
719820	Manifold only - 96-Channel
719622	Biomek FX Disposable Tip Wash ALP - 384-Channel, 120 V
719602	Biomek FX Disposable Tip Wash ALP - 384-Channel, 220 V <i>Includes wash station, wash pump, supply tank, and drain/waste tank, ALP platform. Requires: Biomek FX Device Controller (P/N 719366).</i>
719821	Manifold only - 384-Channel



www.beckmancoulter.com/smartsolutions

Developing innovative solutions in genetic analysis, drug discovery, and instrument systems.

Innovate **Automate**
SIMPLIFY

Beckman Coulter, Inc. • 4300 N. Harbor Boulevard, Box 3100 • Fullerton, California 92834-3100

Sales: 1-800-742-2345 • Service: 1-800-551-1150 • Telex: 678413 • Fax: 1-800-643-4366 • www.beckmancoulter.com

Worldwide Life Science Research Division Offices:

Australia (61) 2 9844-6000 **Canada** (905) 819-1234 **China** (86) 10 6515 6028 **Eastern Europe, Middle East, Africa** (41) 22 994 07 07
France 01 49 90 90 00 **Germany** (89) 35870-0 **Hong Kong** (852) 2814 7431/2814 0481 **Italy** 02-953921 **Japan** 03-5404-8359
Mexico 525-605-77-70 **Netherlands** 0297-230630 **Singapore** (65) 6339 3633 **South Africa, Sub-Saharan Africa** (27) 11-805-2014/5 **Spain** (34) 91 3836080
Sweden 08-564 85 900 **Switzerland** 0800 850 810 **Taiwan** (886) 2 2378 3456 **Turkey** 90 216 309 1900 **U.K.** 01494 441181 **U.S.A.** 1-800-742-2345

B2002-5061-CB-10

© 2002 Beckman Coulter, Inc.

 Printed in U.S.A. on recycled paper.